

Egg Flow



MAXIMUS

The Egg Flow regulates and adapts the speed of the conveyor belts to ensure both safe and quicker transport of the eggs from the nest or cage to the egg packer, in perfect synchronization. This functionality makes for fewer dirty and cracked eggs, and quicker transport guarantees a quicker temperature control of the egg. In terms of labor management, it helps save time and improves the workstation ergonomics.

ADAPTABILITY

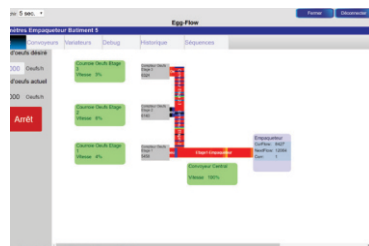
Every egg production building is different. The MAXIMUS Egg Flow system allows all buildings to work seamlessly.

MAXIMUS manages the situation efficiently, whether it is for one building or more, in broiler-breeders as well as in table egg-layers.

HOW DOES IT WORK?

MAXIMUS controls the speed of belts, rows and conveyors to ensure a steady flow of eggs for the packer.

MAXIMUS makes sure to provide a constant supply of eggs, taking into account the traffic density of each tributary and adapting the belt speeds of nests or cages, elevators, and conveyors.



The Egg Flow

will increase
your
production
profits



PRECISION
Ag 

Spruce Grove, Alberta
www.precisionagsystems.com

Brian
403-540-2148

Rob
780-977-4307

Vic
306-221-7408

Tony
780-718-3305



Egg Flow



MAXIMUS

BENEFITS **WORKING STATIONS**

- Optimized flow
- Improved ergonomics and work pace
- Significantly reduced labor cost, which can be assigned to other tasks (ground eggs, maintenance)

EGGS

- Noticeable increase of usable eggs
- Fewer eggs damaged, dirty, cracked
- Better management of the environment and respect of the egg microbiology
- Flock monitoring and egg performance

EQUIPMENT

- Soft rolling, reduces breakage due to wear
- Cooling cycle



COLOR TOUCH **SCREEN CONTROL**

MAXIMUS ADAPTS THE SPEED OF THE BELTS **ACCORDING TO TRAFFIC DENSITY**



PRECISION
Ag

Spruce Grove, Alberta
www.precisionagsystems.com

Brian
403-540-2148

Rob
780-977-4307

Vic
306-221-7408

Tony
780-718-3305